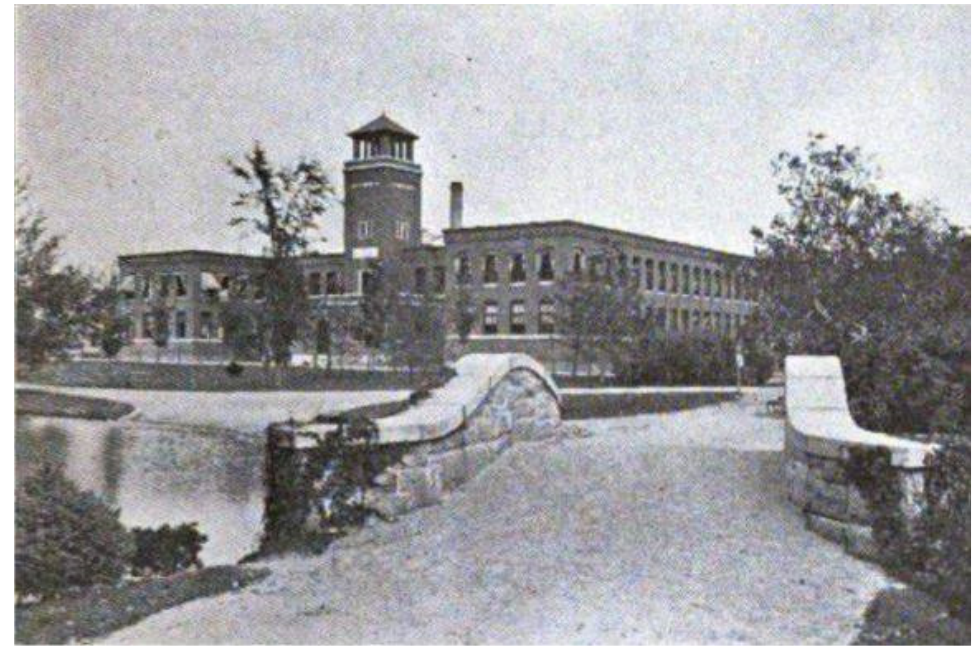
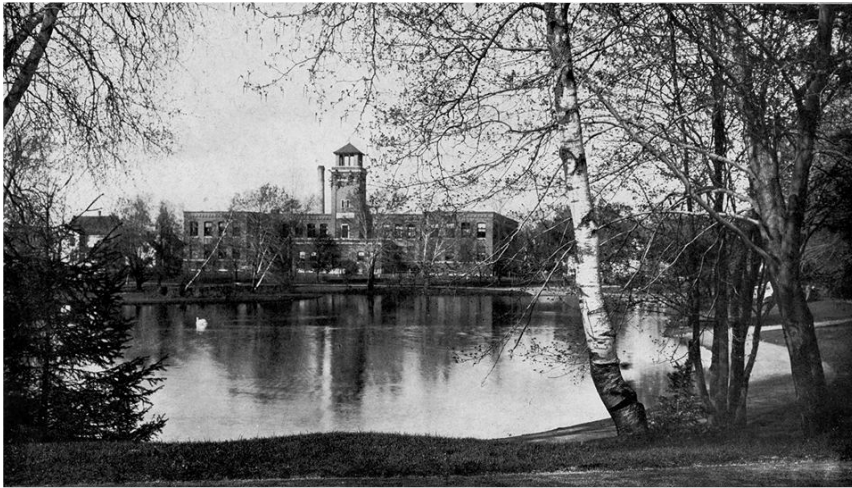


White Park, Concord NH



Land donated to the City in 1884 for city park.



Picture on left from 1899, right from 1906

White Park Pond

- Pond created around 1890 – at the time generally around 10 ft deep was mainly spring fed. Spring was used as city drinking water
- Small gate to control water level, drains into city storm water system
- 1984-86 Pond was drained, cleaned and filled to have water depth 4 – 5 feet deep
- 2 acres in size (+/-), currently 4 – 5 feet deep
- Skating pond in winter, spring – fall pond with aerator (fountain)

Sacred Lotus Plant – not currently listed as an invasive plant in NH

2018 – singular plant observed late summer – nice flowers

2019 – slight increase in number of plants – nice flowers

2020 – increase in area of growth – concerned about plant – worked with state to identify options.

2021 – almost 1/4 of pond cover – mechanically harvest late fall

2022 – Hired VHB and DK Water Resources Consulting to help with review and next steps

2022 – almost 1/2 of pond covered – mechanically harvest July and August



July 2020



2021 Pictures of Pond, harvest in Dec.





2022 harvest August and just before and after





2022 harvest October (2nd cutting)

Options for removing lotus plant

- Full Dry Dredge
- Wet Dredge (draglines, long reach backhoes etc.)
- Hydro –raking
- Dredge Material – up to 5,000 cubic yards, de-water onsite, removal..
- Cost considerations
- Permitting needs
- Pond restoration and maintenance plan going forward
- Keep from spreading to other NH water ways

Discussion and questions

